



# BICI Cities Kick-Off Meeting



# GDCI BICI Team

---

# GDCI Executive Leadership Team



**Janette Sadik-Khan**

---

Principal, Bloomberg Associates  
New York, USA



**Skye Duncan**

---

Executive Director  
Dunedin, New Zealand  
skye@gdci.global



**Brianna Williams**

---

Director of Finance & Operations  
New York, USA  
brianna@gdci.global



**Fabrizio Prati**

---

Director of Design  
New York, USA  
fabrizio@gdci.global



**Paul Supawanich**

---

Director of Programs  
Atlanta, USA  
paul@gdci.global

# BICI Team



**Ed Lancaster**

---

Senior Program Manager BICI  
Brussels, Belgium  
ed@gdci.global



**Maria Clara Trujillo**

---

Senior Program Manager – Design Lead BICI  
Medellin, Colombia  
mariaclara@gdci.global



**Giovanni Zayas**

---

Program Manager  
Puebla, Mexico  
giovanni@gdci.global



**Solomon Green-Eames**

---

Program Manager  
London, United Kingdom  
solomon@gdci.global



**Daniela Cantillo**

---

Communications Strategist  
New York, United States  
daniela@gdci.global

## **01 The BICI Program**

### **01.1. Technical Assistance**

### **01.2. Your BICI Project**

### **01.3. Internal Communication**

### **01.4. Grant Funding & Due Diligence**

## **02 Global Gathering**

## **03 Questions & Answers**

---



# The BICI Program

---



# Congratulations!!!

You were selected from a very competitive process  
with over **275 applications** from cities in 66 countries around the world



# We are excited to support ten cities who will...

1

Dramatically  
**re-imagine  
infrastructure to  
reclaim and repurpose**  
existing space or  
create new facilities  
that put cyclists first

2

**Create  
complete networks**  
that allow people of all  
ages and abilities to  
cycle safely and  
conveniently

3

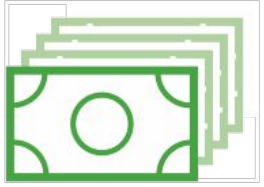
Show what's possible  
by bringing  
**world-class cycling  
infrastructure to  
regions that currently  
lack it**

4

**Experiment with new  
materials, technology,  
& implementation  
methods** to make  
networks easier to  
build or encourage  
more people to ride

# What the program consists of

## Grant funding



## Technical Assistance



## BICI Cities Network

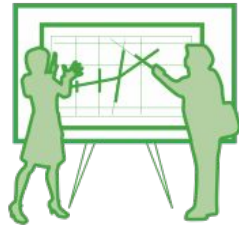


## Communications and Storytelling

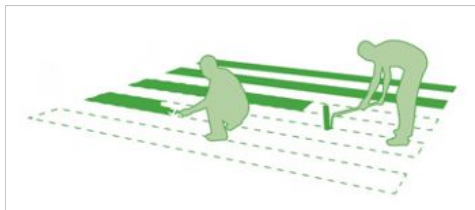


---

## Capacity Building Sessions



## Project Design Review and Implementation Support





EXECUTIVO

TUR  
E TURISMO

4001135

Y 8719

GUIDE ME THROUGH THE WORLD  
**WANDERLUST**

Unimed  
Instituto de Fortalecimento

# Technical Assistance

---



# What is "Technical Assistance"?

GDCI will provide assistance in...



**Policy and Design  
Guidance**



**Capacity Building**



**Community  
Engagement**

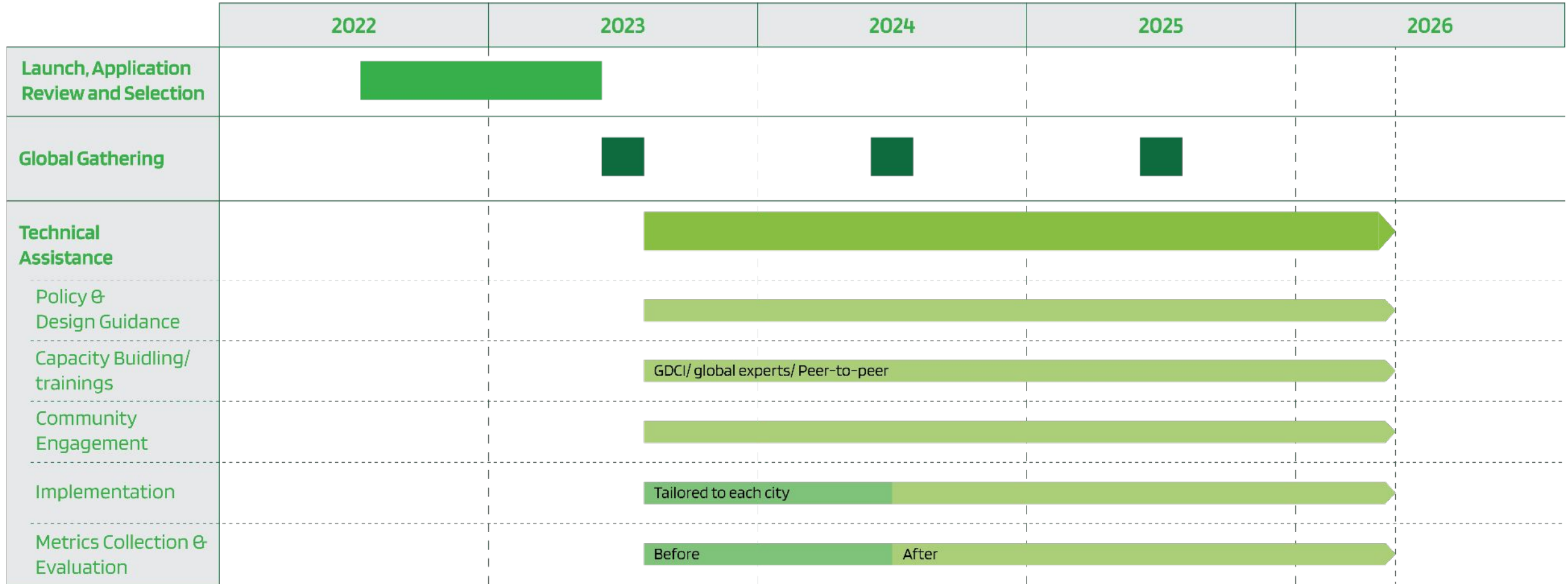


**Interventions and  
Transformations  
Implementation  
Support**



**Metric Collection  
and Evaluation**

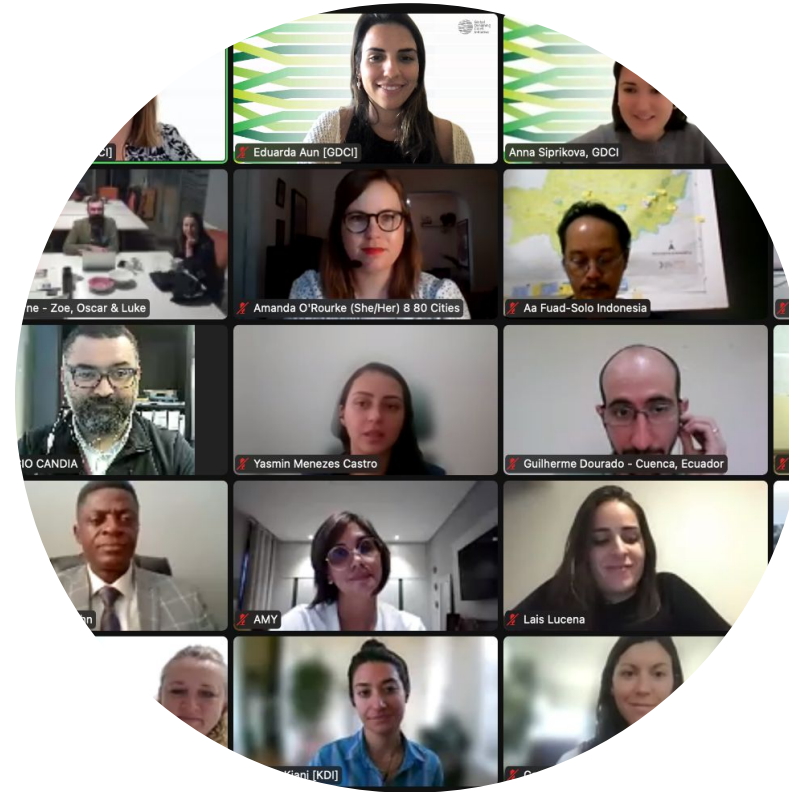
# How will “Technical Assistance” be delivered?



# How will "Technical Assistance" be delivered?



**In-Person GDCI Visits**



**Online Meetings & Trainings**





Photo: Ricardo Franco

# Your BICI Project

---

Comprehensive corridor redesigns that prioritize active mobility and bicycle taxis

# Quelimane, Mozambique



# Quelimane, Mozambique

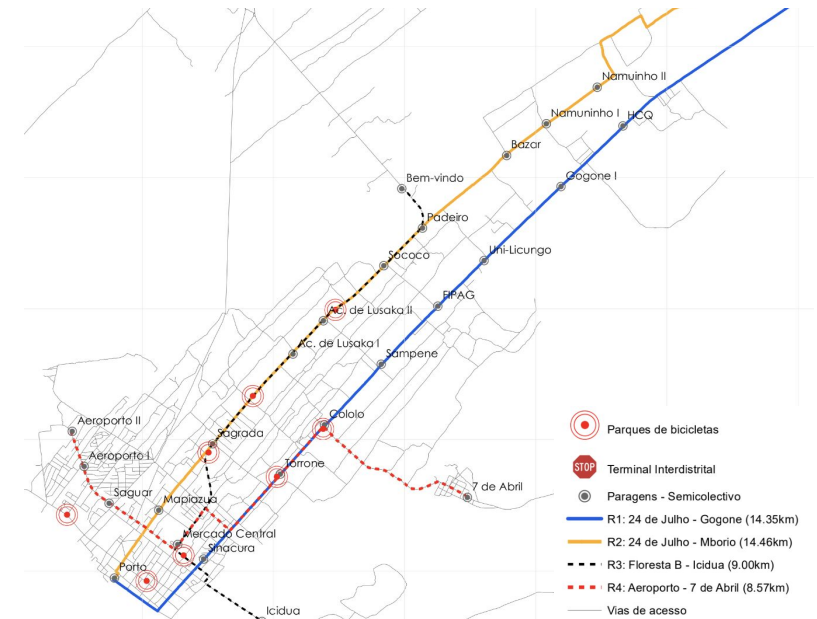
## Summary

Quelimane will deliver a **comprehensive 5km cycling corridor that builds on continent-leading demand for cycling**. The proposal includes establishing proper **bicycle taxi facilities, a unique approach to a critical form of transport in the city**, to set new standards for similar cities in the region and become a model for smaller and rural African cities.



## Highlights

- Extremely high existing cycle usage (35%), comparable with global cycling cities.
- Unique elements including bicycle taxis and taxi stops that are very popular in the city.
- Aim to develop a series of key arterial cycle routes to support existing cycling and grow modal share.
- Proposal builds on support from other international NGOs such as UN-Habitat, ITDP, and the Government of Portugal
- Mayor has ambitions for Quelimane to become the "Cycling capital of Africa"



# Questionnaire

We will follow up with more questions regarding your project to on the following topics :

- Policy & design
- Community engagement
- Metrics & Data Collection
- Funding
- Implementation
- Communication strategies
- City staff expertise

This will help us tailor our support over the coming months and years.

# Internal Communication

---

# Defining Communication Preferences

## City Contact:

- Primary City Contact Person: **Sacur Chipire**
- Secondary City Contact Person: **Mauro Marques**

## Contacting GDCI:

- Please continue to use: [bici@gdci.global](mailto:bici@gdci.global) for all communications.
  - **City has a preference for using both WhatsApp + Email**

## Regular Check-ins

- We hope to establish regular meetings with your city after the Global Gathering.

# Grant Funding

---



# Grant Disbursement

Our initial proposal for a grant disbursement over the duration of the program is:

Year	Grant Amount	Notes
Year 1	40% payment	The first payment will be made upon completing and signing the grant.
Year 2	30% payment	Second payment will be connected to submission of progress reports at the end of 2024.
Year 3	30% payment	Third payment will be connected to submission of progress reports at the end of 2025.

- We can work with your city further on specific needs, as we finalize the details of the grant.
- The grant will be dated June 1, 2023, and be active for 30 months (or 2.5 years) ending December 31, 2025.

# Global Gathering

---



Cycleway on Blackfriars Bridge, London



ROAD  
OPEN TO  
 pedestrian icon  
 stroller icon  
 bicycle icon

ROAD  
CLOSED

Low Traffic Neighborhood, Dulwich, Greater London

# Concept

The Global Gathering will be a chance for your city's team to **familiarise itself with the BICI program, gain expert technical knowledge and develop connections** with other BICI cities and globally leading technical experts.



## Interdisciplinary City Team

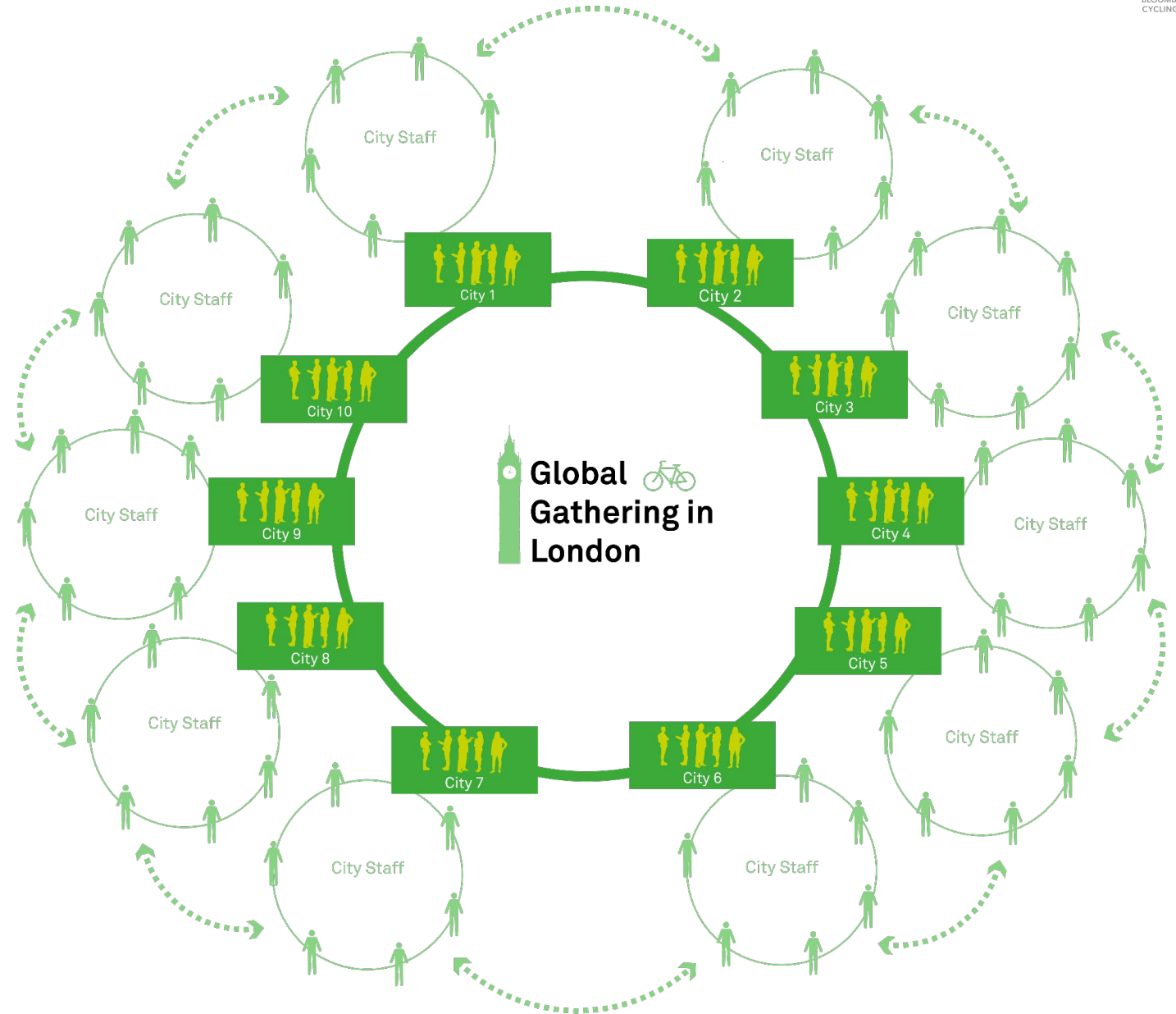


Each city sends an interdisciplinary team of 5 people who shape cycling infrastructure in their city to the Global Gathering.

# Concept

The team who attends the Global Gathering can then disseminate the knowledge and experience gained at Global Gathering within networks in your city.

Connections between the BICI Network Cities are formed to exchange technical expertise and knowledge.



## Interdisciplinary City Team



Each city sends an interdisciplinary team of 5 people who shape cycling infrastructure in their city to the Global Gathering.

# Purpose of the event

- Develop a clear understanding of your roles and responsibilities as part of the BICI program
- Be inspired through local and international examples of best practice provided through event programming to help with the development of your project.
- Meet the BICI team and understand GDCI's foundational technical tools and resources available to start your BICI project.
- Meet with your fellow 9 BICI winning cities, network and exchange ideas.



# Key Information

- **Date:** June 26th - 29th
- **Location:** The Ned, London, United Kingdom
- **Attendees:** 5 staff members from each 10 selected cities, GDCI staff & other technical invited guests.
- **Language:** The event will be primarily held in English with simultaneous translation for non-English speaking attendees.



The Ned Hotel



# Logistics

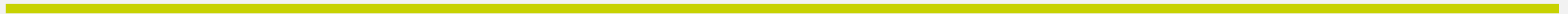
- You must nominate 5 staff members that you want to attend the gathering.
  - We encourage you to nominate a **diverse group of delegates** that can help spread the word the knowledge and experience within networks in your city.
- Each participant will receive a registration form to complete.
- We will organize and pay for airfare, transportation, lodging, and meals from June 26-29, 2023.
  - A travel agent will contact you to arrange these details.





Low Traffic Neighborhood, Dulwich, Greater London

# Q&A





Global  
Designing  
Cities  
Initiative

# Thank you!

**@GlobalStreets**



[www.globaldesigningcities.com](http://www.globaldesigningcities.com)